

CONDUCTED IMMUNITY



Test Report #: 72158851 Test Area: GRP1
 EUT Model #: 34044-205C Date: 25 March, 2020
 EUT Serial #: N/A EUT Power: 32 VDC Temperature: 24 °C
 Test Method: IEC 61000-4-6 per IEC 61000-6-2 Air Pressure: 97.7 kPa
 Customer: Data Panel Relative Humidity: 28.0 %
 EUT Description: DP Block Input module Page: 1 of 3

Notes: This unit has a TVS diode on the Power Supply

TEST FREQUENCY (MHz)	TEST LEVEL (VOLTS)	MODULATION TYPE (SEE KEY)	INJECTION METHOD	LEAD DESCRIPTION (TYPE)	STEP SIZE (%)	DWELL TIME (SEC.)	COMPLIES		CRITERIA MET	REMARKS
							Yes	No		
.15	10	1	CDN-M2	DC Power	1	3	✓		A	
↓	↓	↓	↓	↓	↓	↓	↓		↓	
80	↓	↓	↓	↓	↓	↓	↓		↓	
.15	10	1	EM Clamp	RS232	1	3	✓		A	
↓	↓	↓	↓	↓	↓	↓	↓		↓	
80	↓	↓	↓	↓	↓	↓	↓		↓	
.15	10	1	EM Clamp	I/O bundled	1	3	✓		A	Six DC and Six DC Ground bundled during I/O Cable testing.
↓	↓	↓	↓	↓	↓	↓	↓		↓	
80	↓	↓	↓	↓	↓	↓	↓		↓	

Tested by: Jasen Kwok
Printed


Signature

Reviewed by: _____
Printed

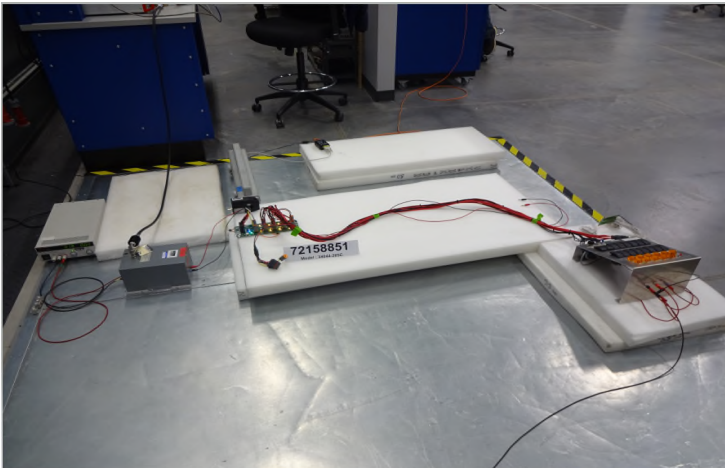
Signature

Modulation Key					
#	Type	Freq.	Shape	Duty	Depth
1	AM	1 kHz	Sine	N/A	80%
2	PM	1 kHz	Square	50%	100%
3					
4					
5					

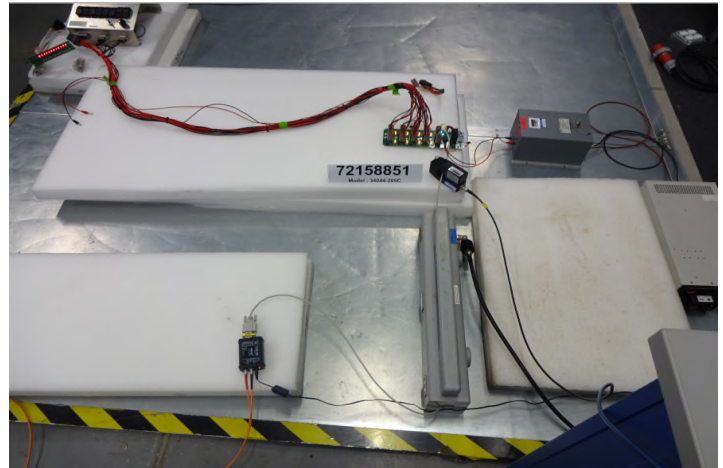
CONDUCTED IMMUNITY

Test Report #: 72158851 Test Area: GRP1
 EUT Model #: 34044-205C Date: 25 March, 2020
 EUT Serial #: N/A EUT Power: 32 VDC Temperature: 24 °C
 Test Method: IEC 61000-4-6 per IEC 61000-6-2 Air Pressure: 97.7 kPa
 Customer: Data Panel Relative Humidity: 28.0 %
 EUT Description: DP Block Input module Page: 2 of 3
 Notes: This unit has a TVS diode on the Power Supply

Test Setup Photos



DC Input Power



RS232 Comm Cable

Tested by: Jasen Kwok
 Printed


 Signature

Reviewed by: _____
 Printed

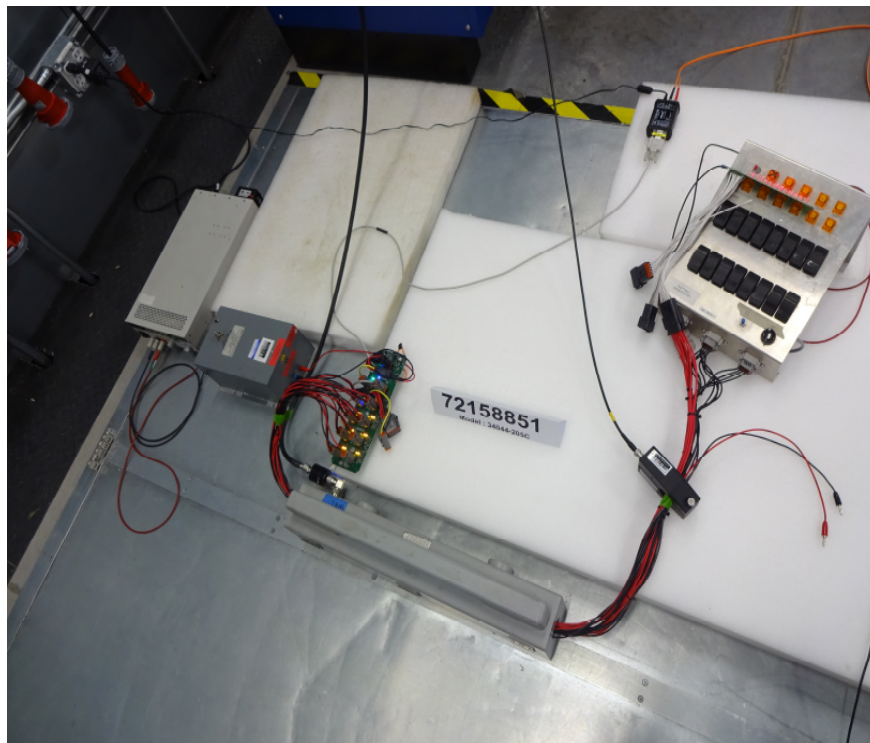
Signature

Modulation Key					
#	Type	Freq.	Shape	Duty	Depth
1	AM	1 kHz	Sine	N/A	80%
2	PM	1 kHz	Square	50%	100%
3					
4					
5					

CONDUCTED IMMUNITY

Test Report #: 72158851 Test Area: GRP1
 EUT Model #: 34044-205C Date: 25 March, 2020
 EUT Serial #: N/A EUT Power: 32 VDC Temperature: 24 °C
 Test Method: IEC 61000-4-6 per IEC 61000-6-2 Air Pressure: 97.7 kPa
 Customer: Data Panel Relative Humidity: 28.0 %
 EUT Description: DP Block Input module Page: 3 of 4
 Notes: This unit has a TVS diode on the Power Supply

Test Setup Photos



I/O (Digital Cables)

Tested by: Jasen Kwok
 Printed


 Signature

Reviewed by: _____
 Printed

Signature

Modulation Key					
#	Type	Freq.	Shape	Duty	Depth
1	AM	1 kHz	Sine	N/A	80%
2	PM	1 kHz	Square	50%	100%
3					
4					
5					

CONDUCTED IMMUNITY



Test Report #: 72158851 Test Area: GRP1
EUT Model #: 34044-205C Date: 25 March, 2020
EUT Serial #: N/A EUT Power: 32 VDC Temperature: 24 °C
Test Method: IEC 61000-4-6 per IEC 61000-6-2 Air Pressure: 97.7 kPa
Customer: Data Panel Relative Humidity: 28.0 %
EUT Description: DP Block Input module Page: 4 of 4
Notes: This unit has a TVS diode on the Power Supply

Tested by: Jasen Kwok
Printed


Signature

Reviewed by: _____
Printed

Signature

Modulation Key					
#	Type	Freq.	Shape	Duty	Depth
1	AM	1 kHz	Sine	N/A	80%
2	PM	1 kHz	Square	50%	100%
3					
4					
5					